

OPAL, TOONGABBIE- LANDSCAPE DA PACKAGE

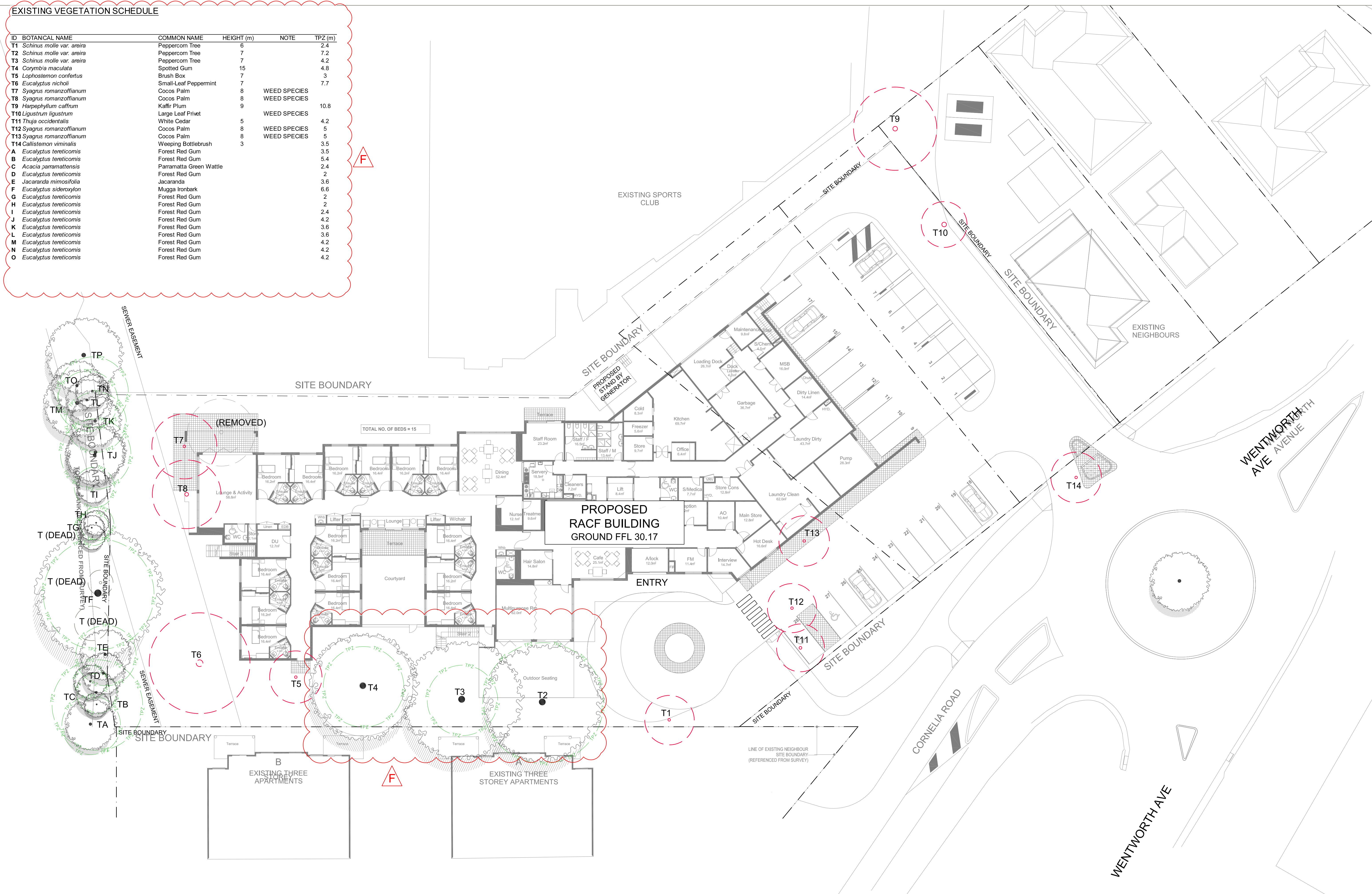
DWG	DRAWING TITLE	SCALE
LA01	COVER SHEET AND CONTEXT PLAN	N/A
LA02	TREE REMOVAL AND RETENTION PLAN	1:200@A1
LA03	LANDSCAPE PLAN - GROUND FLOOR	1:200@A1
LA04	PLANTING PLAN - GROUND FLOOR	1:200@A1
LA05	LANDSCAPE PLAN - LEVEL 1	1:200@A1
LA06	LANDSCAPE PLAN - LEVEL 3	1:200@A1
LA07	LANDSCAPE SECTIONS / DETAILS	VARY@A1
LA08	LANDSCAPE SECTIONS	1:200@A1
LA09	LANDSCAPE SIGNAGE PLAN	VARY@A1



LOCAL CONTEXT AND TRANSPORT PLAN
NOT TO SCALE

EXISTING VEGETATION SCHEDULE

ID	BOTANICAL NAME	COMMON NAME	HEIGHT (m)	NOTE	TPZ (m)
T1	<i>Schinus molle</i> var. <i>aireira</i>	Peppercom Tree	6		2.4
T2	<i>Schinus molle</i> var. <i>aireira</i>	Peppercom Tree	7		7.2
T3	<i>Schinus molle</i> var. <i>aireira</i>	Peppercom Tree	7		4.2
T4	<i>Corymbia maculata</i>	Spotted Gum	15		4.8
T5	<i>Lophosiemon confertus</i>	Brush Box	7		3
T6	<i>Eucalyptus nicholi</i>	Small-Leaf Peppermint	7		7.7
T7	<i>Syagrus romanzoffianum</i>	Cocos Palm	8	WEED SPECIES	
T8	<i>Syagrus romanzoffianum</i>	Cocos Palm	8	WEED SPECIES	
T9	<i>Harpephyllum caffrum</i>	Kaffir Plum	9		10.8
T10	<i>Ligustrum ligustrum</i>	Large Leaf Privet		WEED SPECIES	
T11	<i>Thuja occidentalis</i>	White Cedar	5		4.2
T12	<i>Syagrus romanzoffianum</i>	Cocos Palm	8	WEED SPECIES	5
T13	<i>Syagrus romanzoffianum</i>	Cocos Palm	8	WEED SPECIES	5
T14	<i>Callistemon viminalis</i>	Weeping Bottlebrush	3		3.5
A	<i>Eucalyptus tereticornis</i>	Forest Red Gum			3.5
B	<i>Eucalyptus tereticornis</i>	Forest Red Gum			5.4
C	<i>Acacia paramattensis</i>	Parramatta Green Wattle			2.4
D	<i>Eucalyptus tereticornis</i>	Forest Red Gum			2
E	<i>Jacaranda mimosifolia</i>	Jacaranda			3.6
F	<i>Eucalyptus sideroxylon</i>	Mugga Ironbark			6.6
G	<i>Eucalyptus tereticornis</i>	Forest Red Gum			2
H	<i>Eucalyptus tereticornis</i>	Forest Red Gum			2
I	<i>Eucalyptus tereticornis</i>	Forest Red Gum			2.4
J	<i>Eucalyptus tereticornis</i>	Forest Red Gum			4.2
K	<i>Eucalyptus tereticornis</i>	Forest Red Gum			3.6
L	<i>Eucalyptus tereticornis</i>	Forest Red Gum			3.6
M	<i>Eucalyptus tereticornis</i>	Forest Red Gum			4.2
N	<i>Eucalyptus tereticornis</i>	Forest Red Gum			4.2
O	<i>Eucalyptus tereticornis</i>	Forest Red Gum			4.2



TaylorBrammer

Taylor Brammer Landscape Architects Pty Ltd
Sydney Studio
218 Oxford Street
Woolloomah, NSW, 2025

Opal

specialist aged care

CLIENT:

OPAL TOONGABBIE

LEGEND

SITE BOUNDARY

EXISTING TREE
RETAINED

TREE PROTECTION ZONE AS
PER ARBORISTS REPORT

29.50

29.61

EXISTING TREE
REMOVED

PROPOSED CONTOUR
TO ENG. DETAILS

EXISTING SPOT LEVEL

NOTE:
FOR DETAILED TREE ASSESSMENT
REFER ARBORICULTURAL REPORT BY
TREEIQ

F	REVISED DA	26.06.2018
E	FOR DA - GENERATOR LOCATION	16.12.2016
D	FOR DA	14.12.2016
C	FOR DA	18.11.2016
B	PRE DA COMMENTS	27.10.2016
A	DA SUBMISSION	04.08.2016
ISSUE	DESCRIPTION	DATE

PROJECT:
OPAL TOONGABBIE

DRAWING TITLE:
TREE REMOVAL AND RETENTION PLAN

SCALE: 1:200 @A1
DRAWN: AL

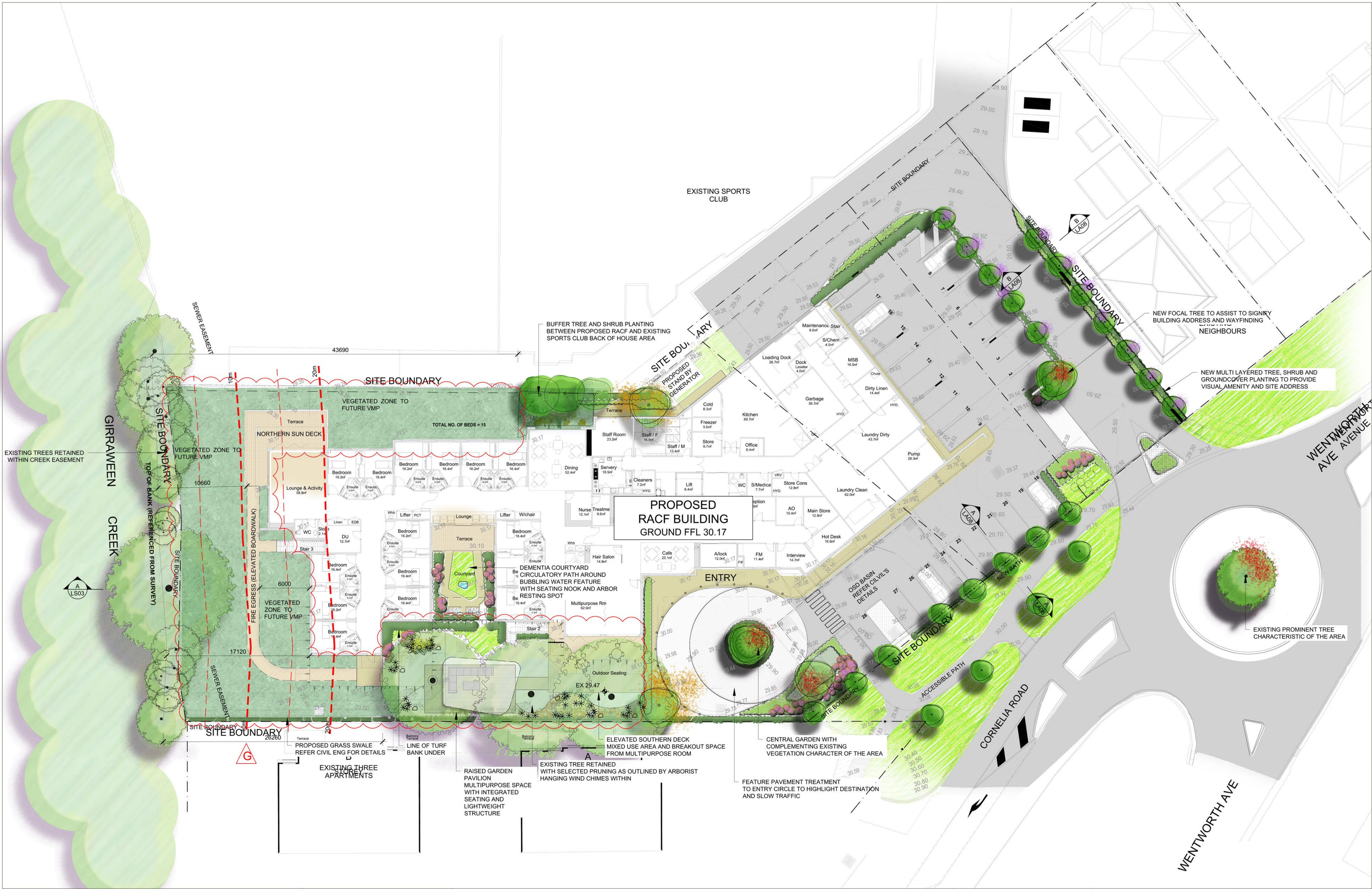
CHECKED: DMT
DESIGNED: AL

DRAWING NO:
LA02

REVISION:
F

CLIENT:
OPAL SPECIALIST AGED CARE

Copyright of Taylor Brammer Landscape Architects Pty Ltd.
ABN 61 098 724 988



TaylorBrammer

TAYLOR BRAMMER LANDSCAPE ARCHITECTS PTY LTD

SYDNEY STUDIO

218 Oxford Street
Woolahra, NSW, 2025

T 61 2 9387 8855

F 61 2 9387 8165

E sydney@taylorbrammer.com.au

CLIENT:

Opal

specialist aged care

LEGEND

SITE BOUNDARY

EXISTING TREE RETAINED

EXISTING SPOT LEVEL

29.50

PROPOSED CONTOUR TO ENG. DETAILS

LIGHTWEIGHT PERGOLA

RIPARIAN ZONE

SCULPTURAL ITEMS

SECURE FENCE

PROPOSED TREES

SHRUBS AND GROUNDCOVERS

TURF

PROJECT: OPAL TOONGABBIE

DRAWING TITLE: LANDSCAPE SITE PLAN

SCALE: 1:200 @A1

CHECKED: DMT

DRAWING NO: LA03

REVISION: G

CLIENT: OPAL SPECIALIST AGED CARE

Copyright of Taylor Brammer Landscape Architects Pty Ltd.
ABN 61 098 724 988

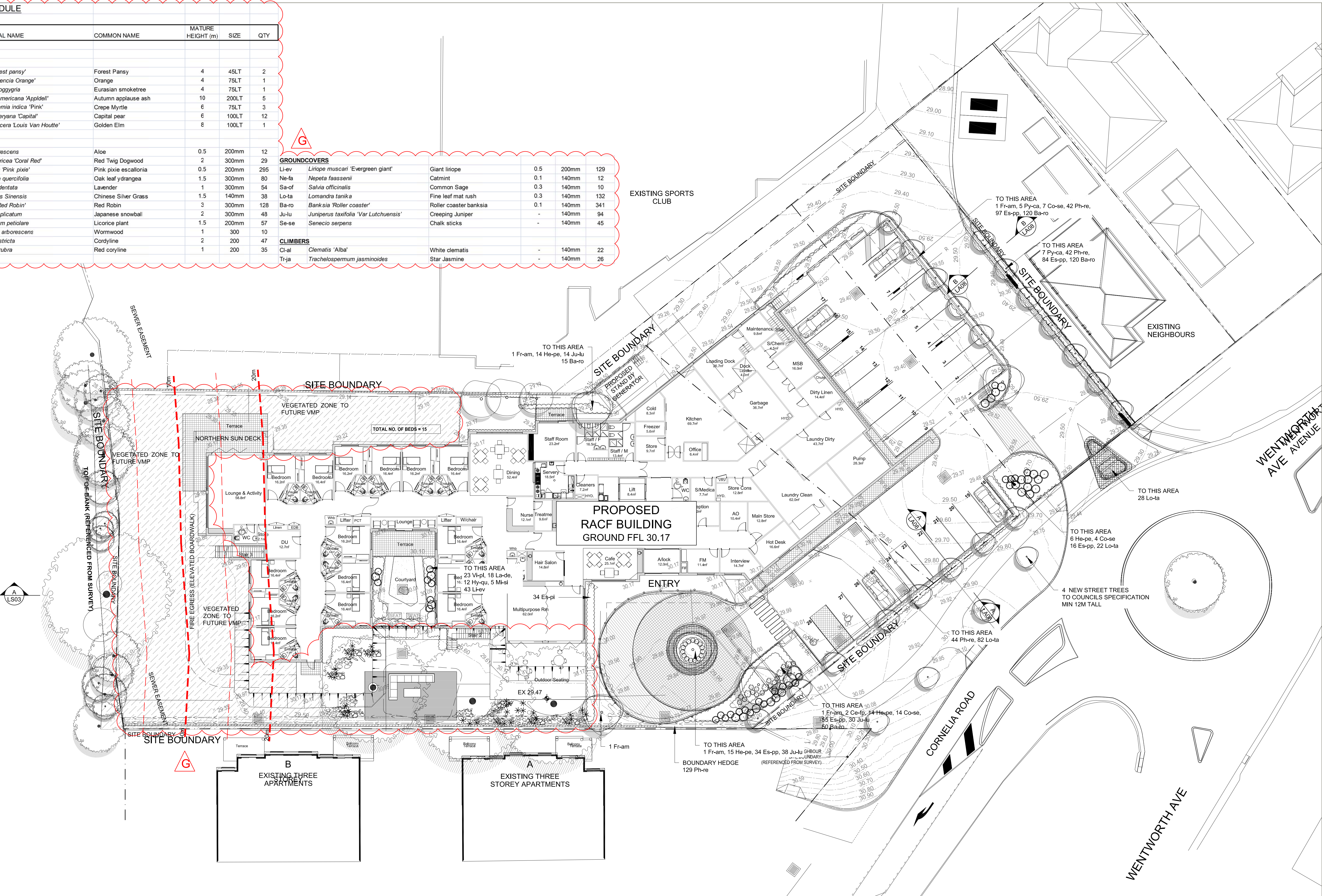
ISSUE	DESCRIPTION	DATE
G	REVISED DA	26.06.2016
F	FOR DA- generator location	16.12.2016
E	FOR DA- Revised ground floor	14.12.2016
D	FOR DA- Revised levels	28.11.2016
C	FOR DA	18.11.2016
B	PRE DA COMMENTS	27.10.2016
A	DA SUBMISSION	04.08.2016

PLANT SCHEDULE

ID	BOTANICAL NAME	COMMON NAME	MATURE HEIGHT (m)	SIZE	QTY
TREES					
Ce-fp	Cercis 'forest pansy'	Forest Pansy	4	45LT	2
Ci-va	Citrus 'Valencia Orange'	Orange	4	75LT	1
Co-co	Cotinus Coggyria	Eurasian smoketree	4	75LT	1
Fr-am	Fraxinus americana 'Appledell'	Autumn applause ash	10	200LT	5
La-in	Lagerstroemia indica 'Pink'	Crepe Myrtle	6	75LT	3
Py-ca	Pyrus calleryana 'Capital'	Capital pear	6	100LT	12
Ul-ho	Ulmus procera 'Louis Van Houtte'	Golden Elm	8	100LT	1

SHRUBS					
Al-ar	Aloe arborescens	Aloe	0.5	200mm	12
Co-se	Cornus sericea 'Coral Red'	Red Twig Dogwood	2	300mm	29
Es-pp	Escallonia 'Pink pixie'	Pink pixie escallonia	0.5	200mm	295
Hy-qu	Hydrangea quercifolia	Oak leaf ydrangea	1.5	300mm	80
La-de	Lavender dentata	Lavender	1	300mm	54
Mi-si	Miscanthus Sinensis	Chinese Silver Grass	1.5	140mm	38
Ph-re	Photinia 'Red Robin'	Red Robin	3	300mm	128
Vi-pl	Viburnum plicatum	Japanese snowball	2	300mm	48
He-pe	Helichrysum petiolare	Licorice plant	1.5	200mm	57
Ar-ar	Artemesia arborescens	Wormwood	1	300	10
Co-st	Cordylina stricta	Cordylina	2	200	47
Co-ru	Cordylina rubra	Red cordylina	1	200	35

GROUNDCOVERS					
Li-ev	Liriope muscari 'Evergreen giant'	Giant liriope	0.5	200mm	129
Ne-fa	Nepeta faassenii	Catmint	0.1	140mm	12
Sa-of	Salvia officinalis	Common Sage	0.3	140mm	10
Lo-ta	Lomandra tanika	Fine leaf mat rush	0.3	140mm	132
Ba-ro	Banksia 'Roller coaster'	Roller coaster banksia	0.1	140mm	341
Ju-lu	Juniperus taxifolia 'Var Lutchuensis'	Creeping Juniper	-	140mm	94
Se-se	Senecio serpens	Chalk sticks	-	140mm	45
CLIMBERS					
Cl-al	Clematis 'Alba'	White clematis	-	140mm	22
Tr-ja	Trachelospermum jasminoides	Star Jasmine	-	140mm	26







PEBBLE BALLAST

FEATURE TREE OF SEASONAL INTEREST IN RAISED PRE-CAST PLANTER OF 2m³ VOLUME

— RAISED RESIDENT GARDEN BEDS
1000mm HIGH
PRE-CAST GRC PLANTERS
VARIOUS PAINTED FINISHES

PLANTING TO THIS ROOFTOP
3 La-in, 36 La-de,
12 Al-ar, 45 Se-se
4 Co-st, 16 Tr-ja

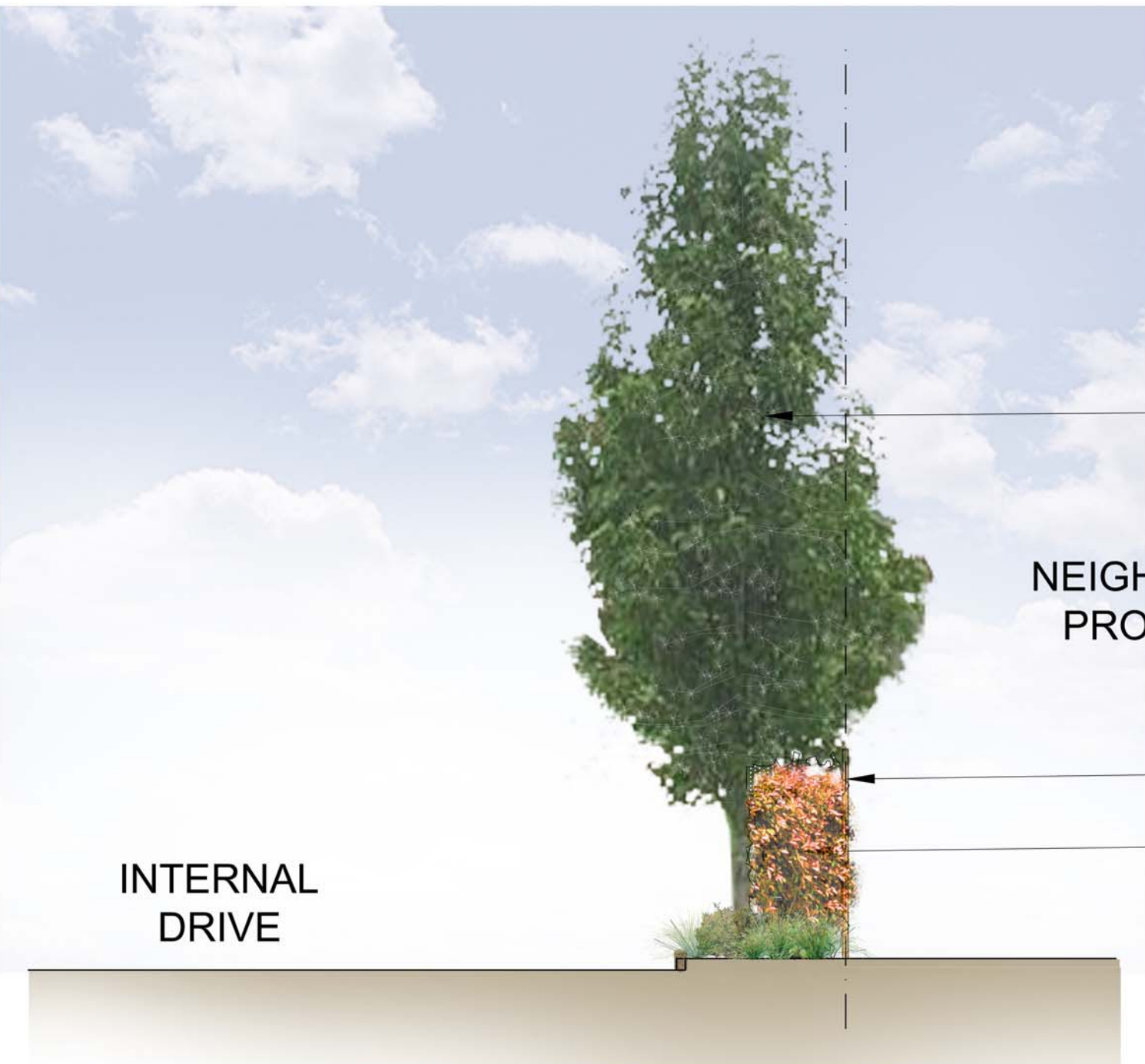




PYRUS CALLERYANA 'CAPITAL'

BOUNDARY HEDGING

SECTION AA
SCALE 1:50



PYRUS CALLERYANA 'CAPITAL'

NEIGHBORING
PROPERTY

1800mm HIGH BOUNDARY FENCE

HEDGE AS PER PLANT SCHEDULE

INTERNAL
DRIVE

SECTION BB
SCALE 1:50

TaylorBrammer

TAYLOR BRAMMER LANDSCAPE ARCHITECTS PTY LTD
SYDNEY STUDIO
218 Oxford Street
Woollahra, NSW, 2025
T 61 2 9387 8855
F 61 2 9387 8155
E sydney@taylorbrammer.com.au

CLIENT:



PROJECT:
OPAL TOONGABBIE

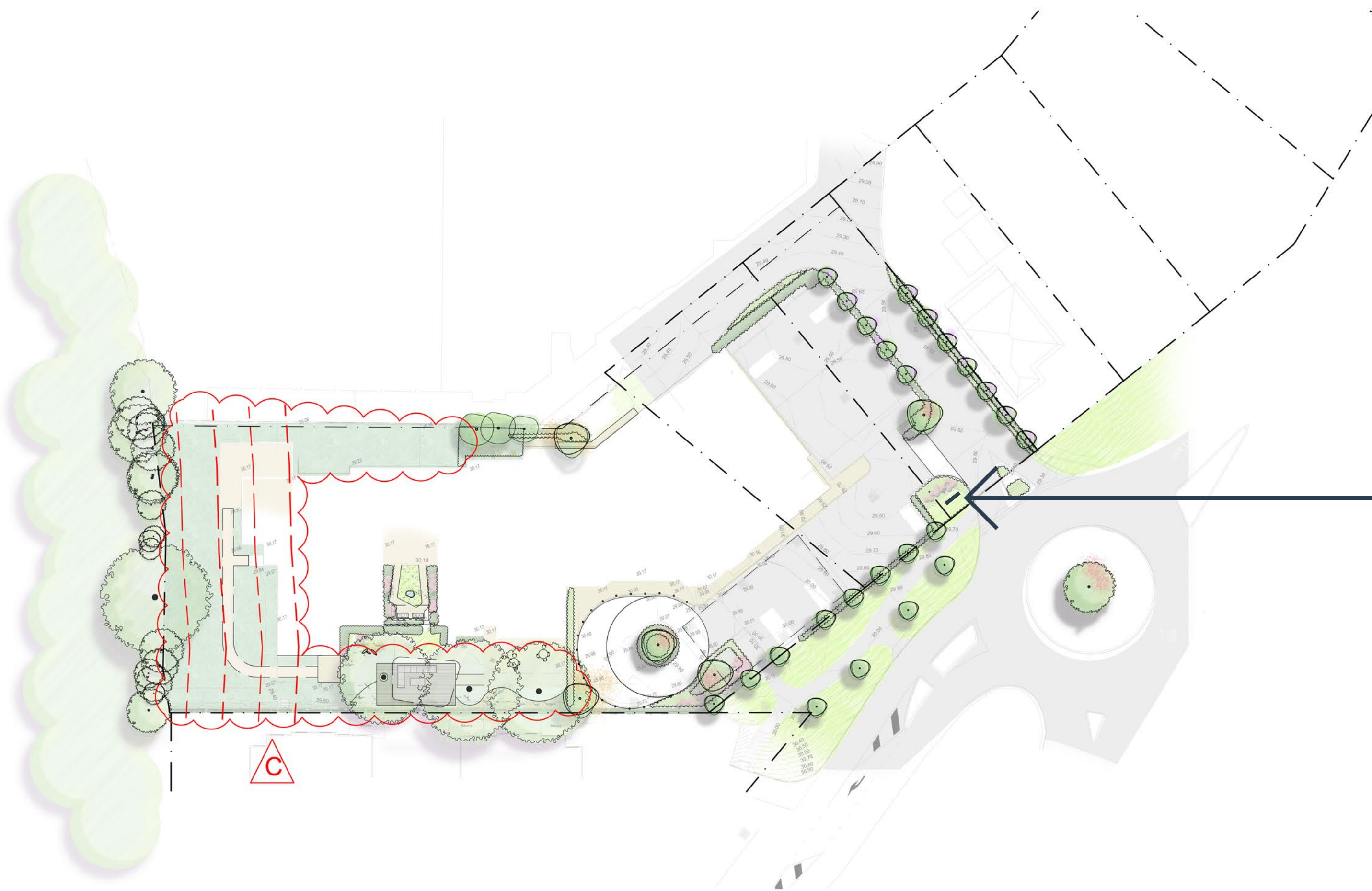
DRAWING TITLE:
LANDSCAPE SECTION

SCALE: VARY @A1 CHECKED: DMT DRAWING NO: REVISION:
CREATED: 24.06.2016 JOB NO: 16-0806
DRAWN: AL DESIGNED: AL LA08 D

CLIENT:
OPAL SPECIALIST AGED CARE

Copyright of Taylor Brammer Landscape Architects Pty Ltd.
ABN 61 098 724 988

ISSUE	DESCRIPTION	DATE
D	REVISED DA	26.06.2018
C	FOR DA	18.11.2016
B	PRE DA COMMENTS	27.10.2016
A	DA SUBMISSION	04.08.2016



KEY PLAN
1:500



ENTRY SIGNAGE (OPAL STANDARD)
FRONT ELEVATION 1:15